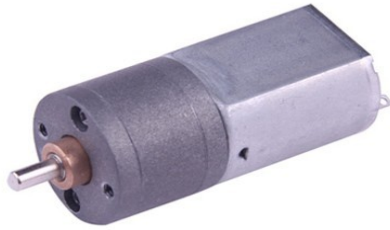


SONTH

武汉尚斯机电有限公司

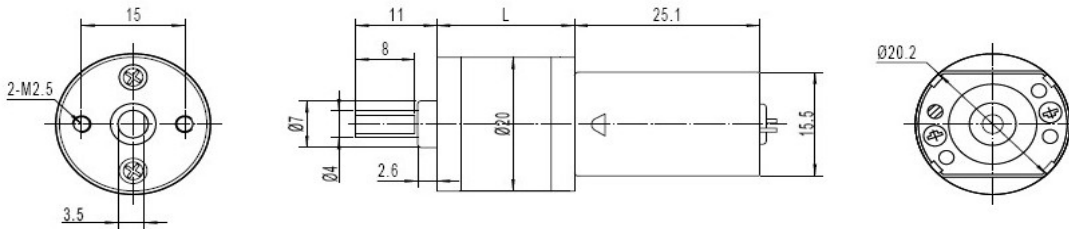
Sonth (HK) Industrial Co.,Ltd

SG20-180: dc spur gear motor



Description

1. Diameter: 20mm
2. Voltage: 12V (6~24V)
3. Input speed: 6500rpm (6000~18000rpm)
4. Reduction ratio: 1/29, 1/31, 1/56, 1/73, 1/107, 1/140, 1/182, 1/206, 1/268, 1/349, 1/446, 1/488....
5. Output speed: 5~500rpm
6. Rated torque: 0.2~4Kg.cm
7. Can match encoder
8. Specs can be customized for you



Reduction Ratio	Gearbox Length L= mm	No load Speed/rpm	Voltage 12, Input 6500rpm (6V,9V,12V,24V)				Stall	
			Speed/rpm	Current/A	Torque/Kg.cm	Power/W	Current/A	Torque/Kg.cm
1/29	15.9	220	180	0.17	0.25	1.0	0.4	2.0
1/31	17.4	210	168	0.17	0.30	1.0	0.4	2.0
1/56	17.4	116	90	0.17	0.35	1.0	0.4	2.0
1/73	17.4	90	70	0.17	0.40	1.0	0.4	2.0
1/107	18.9	60	48	0.17	0.60	1.0	0.4	2.0
1/140	18.9	46	37	0.17	1.0	1.0	0.4	5.0
1/182	18.9	35	28	0.17	2.0	1.0	0.4	5.0
1/206	20.4	30	24	0.17	2.5	1.0	0.4	5.0
1/268	20.4	24	19	0.17	3.0	1.0	0.4	7.0
1/349	20.4	18	15	0.17	3.5	1.0	0.4	8.0
1/446	20.4	15	12	0.17	3.8	1.0	0.4	8.0
1/488	20.4	12	8	0.17	4.0	1.0	0.4	8.0

Tel: +86-27-87153161

Fax: +86-27-51893787

Address: 26th Floor, Block A, LongAn GangHui City,
MinZu Road, Optical Vally, WuHan, HuBei, China

Email: cassy@sonth-industrial.com

Web: www.sonth-industrial.com ; www.sonth123.com