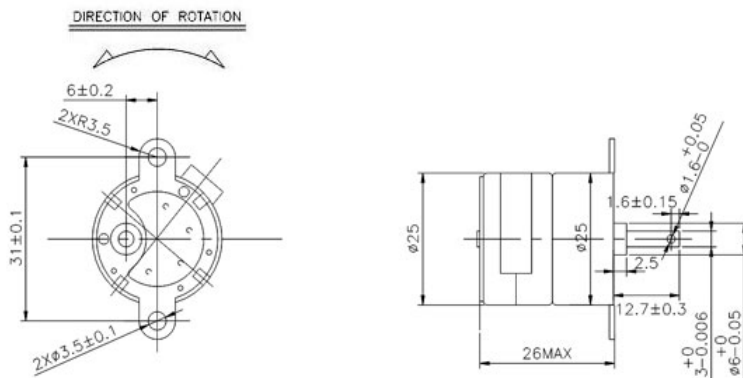


SG25-25PM: dc stepper gear motor



Description

- 1.Size: 25*26mm
- 2.Voltage: 12V (5~12V)
- 3.Step angle: 15°
- 4.Reduction ratio: 1/60....
- 5.Specs can be customized for you



UNIT: MILLIMETERS WEIGHT: 52 g(APPROX)

Reduction Ratio	Voltage V	Step Angle		Resistance Ω	Torque	
		degree	Phase		Pull-in/g.cm	Pull-out/g.cm
1/60	12	15°/60	4	20	750	5000

TEL:+86-755-89480927
 FAX:+86-755-88366423
 Web: www.sonth123.com
 Msn: sonth123@hotmail.com