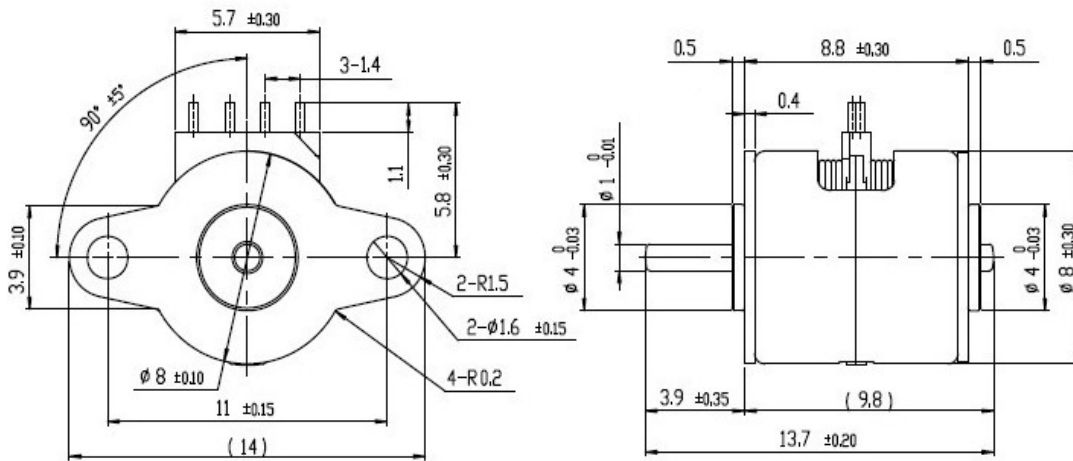


### S08PM: dc stepper motor



#### Description

- 1.Size: 8\*8.8 mm
- 2.Voltage: 3.5V-12V
- 3.Step angle: 18°
- 4.Phase: 2-2
- 5.Specs can be customized for you



Voltage V	Step Angle		Max Frequency			Torque	
	degree	Phase	Starting/pps	Response/pps	Resistance/ $\Omega$	Pull-in/g.cm	Pull-out /g.cm
3.5	18°	2-2	1100	2500	21	0.25	3.0

TEL:+86-755-89480927  
 FAX:+86-755-88366423  
 Web: [www.sonth123.com](http://www.sonth123.com)  
 Msn: [sonth123@hotmail.com](mailto:sonth123@hotmail.com)