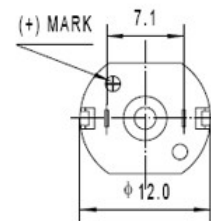
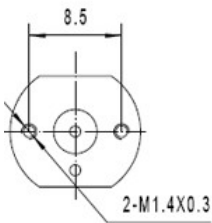


### SF-N30: dc metal brushed motor



#### Description

- 1.Size: 12\*10.1\*20 mm
- 2.Voltage: 2.5 V
- 3.Speed: 5200 rpm
- 4.Rated torque: 1.6 g.cm
- 5.Can match 12mm dia spur gearbox
- 6.Can match encoder
- 7.Specs can be custmized for you



Weight: 7.5g

Unit: mm

Voltage V	No load		At load				Stall	
	Speed/rpm	Current/A	Speed/rpm	Current/A	Torque/g.cm	Power/W	Current/A	Torque/g.cm
2.5	5300	0.015	4220	0.059	1.6	0.07	0.23	8

TEL:+86-755-89480927  
 FAX:+86-755-88366423  
 Web: [www.sonth123.com](http://www.sonth123.com)  
 Msn: [sonth123@hotmail.com](mailto:sonth123@hotmail.com)