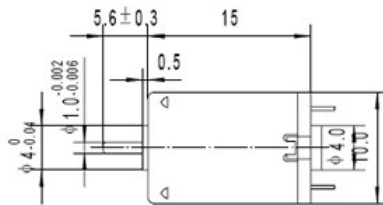
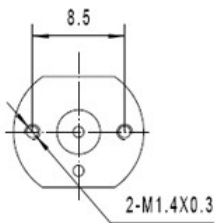


SF-N20: dc metal brushed motor

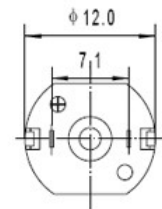


Description

- 1.Size: 12*10*15 mm
- 2.Voltage: 5 V
- 3.Speed: 14500 rpm
- 4.Rated torque: 2.4 g.cm
- 5.Can match 12mm spur gearbox
- 6.Can match encoder
- 7.Specs can be custmized for you



Weight: 5.0g



Unit: mm

Voltage V	No load		At load				Stall	
	Speed/rpm	Current/A	Speed/rpm	Current/A	Torque/g.cm	Power/W	Current/A	Torque/g.cm
2.5	15800	0.096	12200	0.33	0.265	0.27	10.8	10
3	12100	0.0956	9600	0.15	1.9	0.34	1.15	13
5	214	0.037	11000	0.13	2.4	0.27	0.44	11

TEL: +86-755-89480927
 FAX: +86-755-88366423
 Web: www.sonth123.com
 Msn: sonth123@hotmail.com