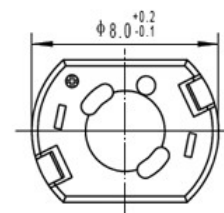
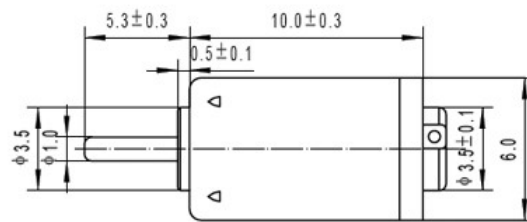
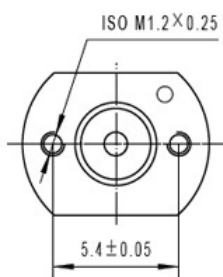


### SF-K10: dc mental brushed motor



#### Description

- 1.Size: 8\*6\*10 mm
- 2.Voltage: 2.5~3.5V
- 3.Speed: 20500 rpm
- 4.Rated torque: 0.63 g.cm
- 5.Specs can be customized for you



Weight: 1.6g

Unit: mm

Voltage V	No load		At load				Stall	
	Speed/rpm	Current/A	Speed/rpm	Current/A	Torque/g.cm	Power/W	Current/A	Torque/g.cm
3	20500	0.057	13870	0.12	0.061	0.089	0.25	1.9

TEL:+86-755-89480927  
 FAX:+86-755-88366423  
 Web: [www.sonth123.com](http://www.sonth123.com)  
 Msn: [sonth123@hotmail.com](mailto:sonth123@hotmail.com)